

Friston Parish Council Meeting

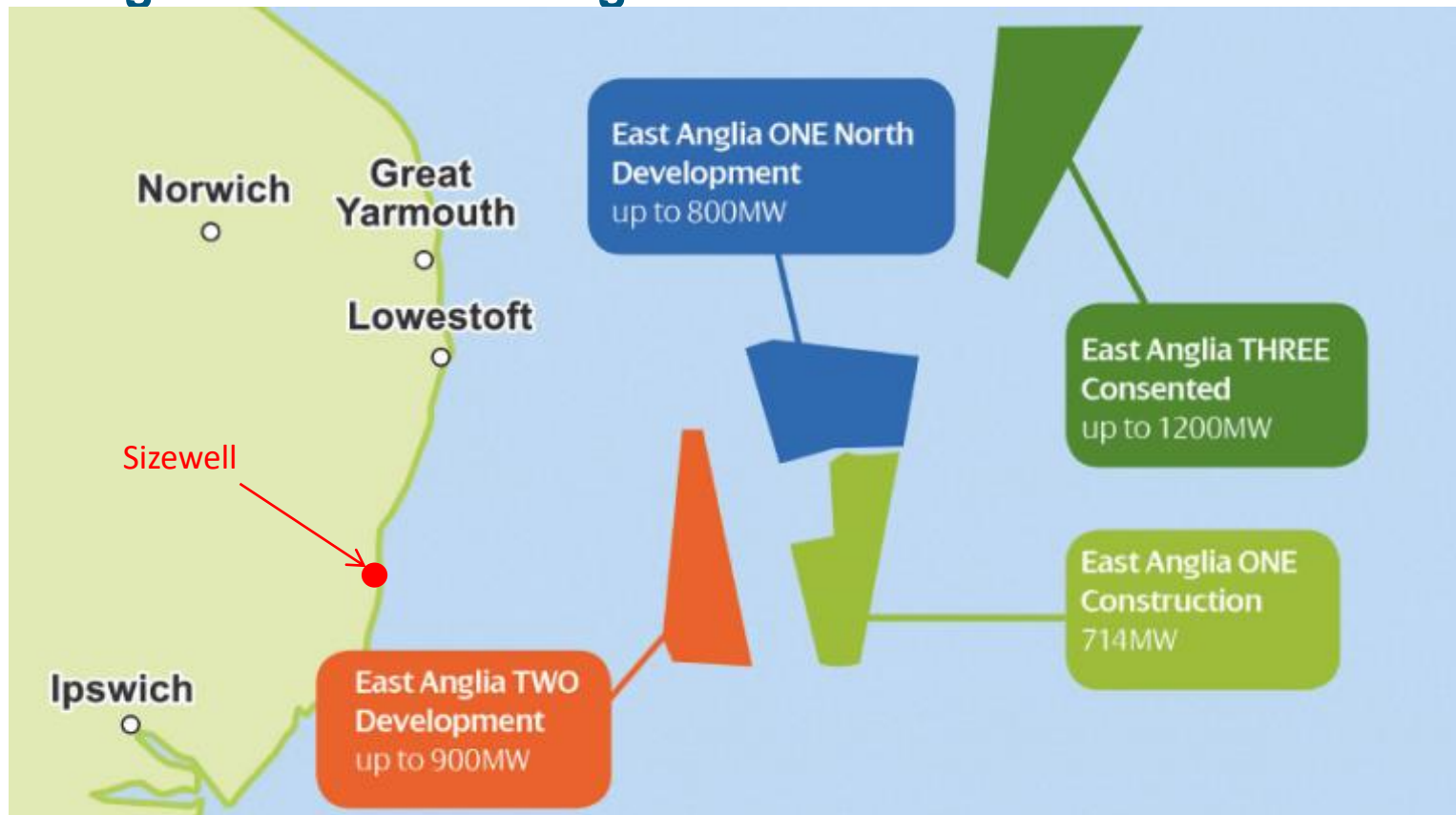
EA1N / EA2 Onshore Substation Site Selection Update

Phil Williamson (RHDHV)
Philip Watkins (Eastern Edge)
16 April 2018
Confidential

What are we seeking from today?

- Inform – update on project progress (up to Public Information Days)
- Development of substation zones for further investigation
- Listen to your feedback and report back to the Project Team
- Forward programme
- Answer as many questions as you might have

East Anglia TWO & East Anglia ONE North - introduction



East Anglia TWO & East Anglia ONE North – input to site selection

- **JULY 2017:** NG update on CION process & move to Sizewell location
briefing with Suffolk CC and Suffolk Coastal & Waveney DC
- **SEPTEMBER 2017:** onshore study area workshop with SCC and SCDC
- **OCTOBER 2017:** onshore study area update following LPA feedback &
substation zone locations
Public Information Days in various locations
- **DECEMBER 2017:** results of RAG assessment, workshop on preferred zones &
eastern zones site visit
- **FEBRUARY 2018:** update on site selection works, workshop and all zones site
visit

Site selection process – technical considerations

SPR Substations

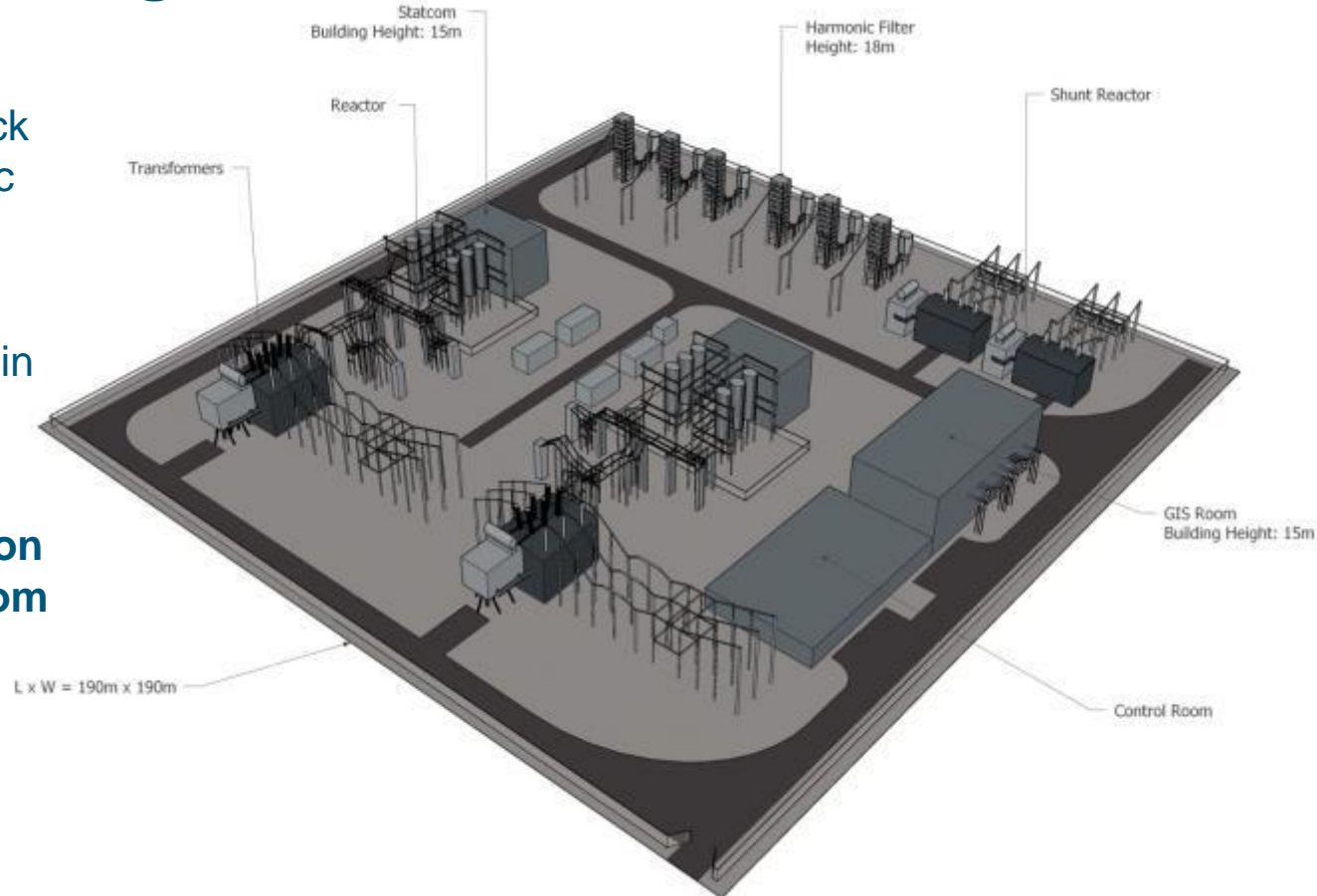
- Number: 2
- Area: 3.61ha
- Footprint: 190x190m
- Height: 18m (was 21m)
- Land for temporary construction works required

NG Substation

- Number: 1
- Area: 4.55ha
- Footprint: 140x325m
- Height: 13m
- Gantries: 21x21m
- Land for temporary construction works required

SPR substation height reduction

- Listened to feedback from LPA and public
- Early engagement with our supply chain
- **Commitment to reducing substation building height from 21m to 15m**



Site selection principles

■ Fundamental principles

- Shortest route preference for cable routeing & minimise footprint for the onshore cable routes as well as minimising cost (hence ultimately reducing the cost of energy to the consumer) and transmission losses;
- Avoidance of key sensitive features where possible and where not, seek to mitigate impacts;
- Minimise the disruption to populated areas; and
- Accommodate the range of technology sought within the design envelope, and exclude options outside the envelope (i.e. ruling out overhead lines).

Development of the onshore study area

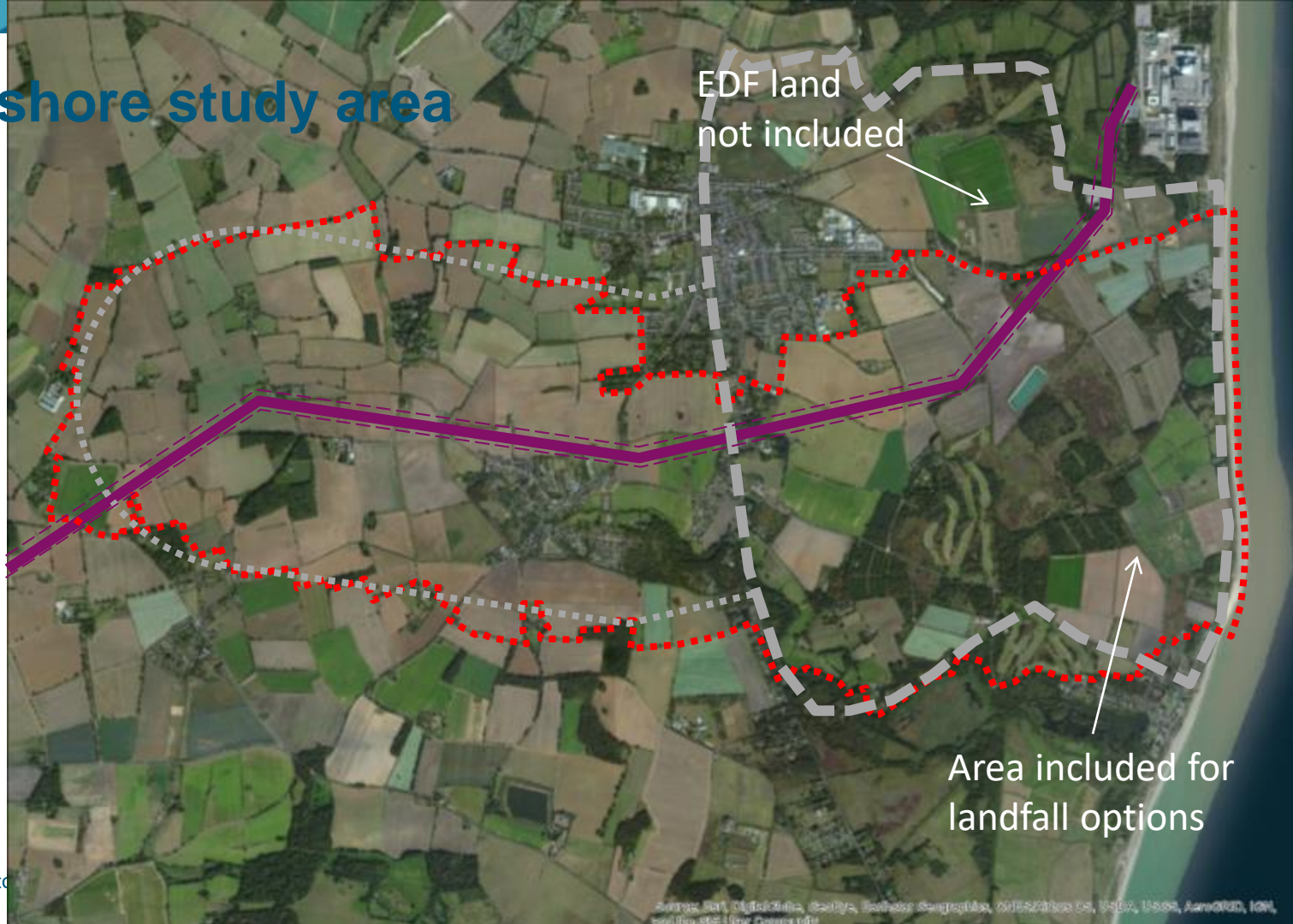
- Sizewell / Leiston – grid connection offer
- Landfall between Sizewell A and Thorpeness
- Siting infrastructure adjacent to the overhead lines is the optimal solution. Study area therefore runs along the overhead lines, approximately 1km either side
- EDF land not included
- Initial study area as far west as Aldeburgh road as crossing it would mean interacting with residential title or woodland
- LPA asked SPR to extend west - potential impacts on the AONB
- PIDs in October and November 2017 – avoid interacting with residential title
- Crossing west would mean utilising the woodland south of Aldringham Court Nursing Home and require the removal of some trees

Substation site selection – Sizewell A

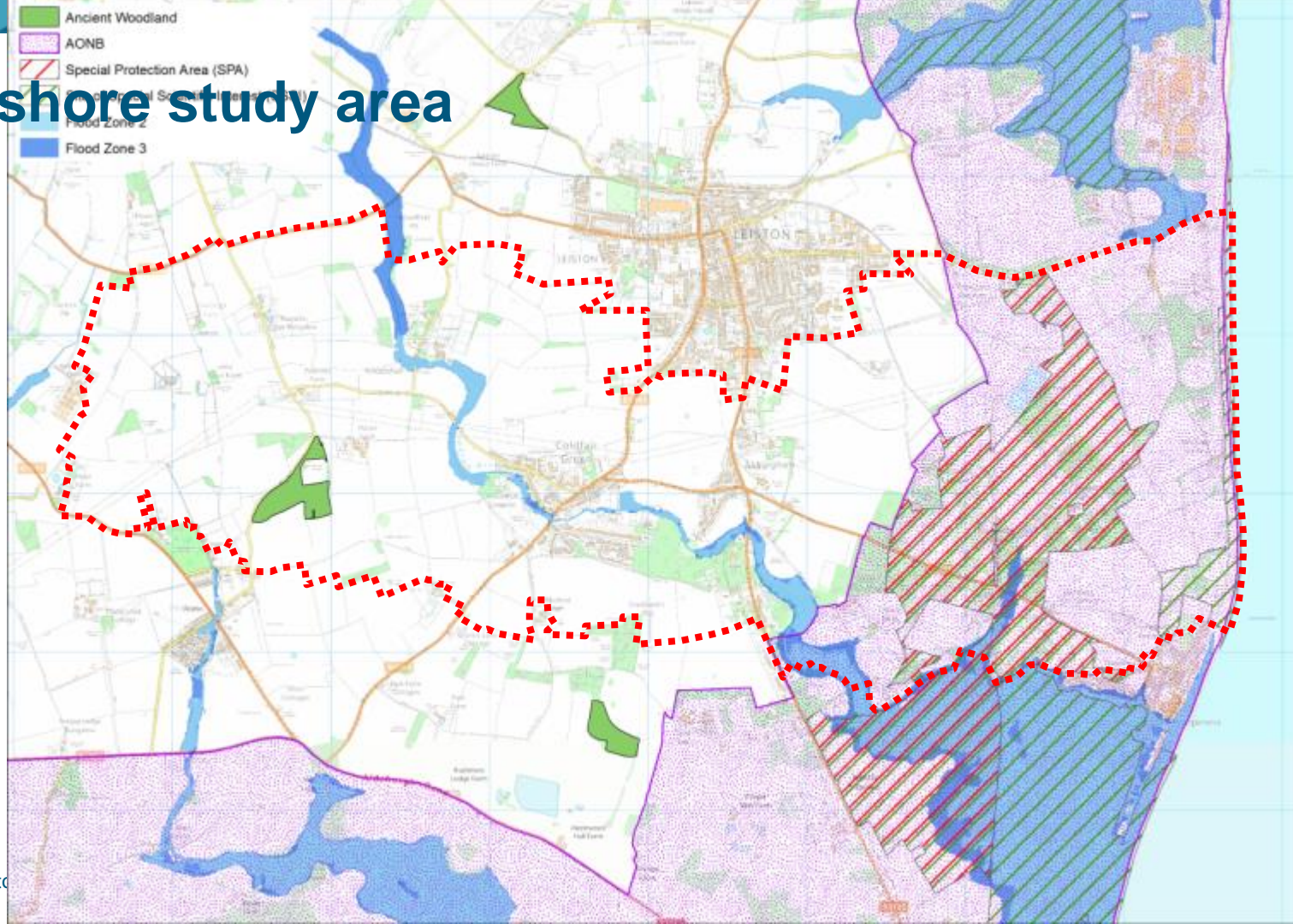
- Footprint
- Care and maintenance programme / space for ongoing inspection and refurbishment
- Interaction with Sizewell B Safety Case – proximity to existing operation asset
- Negotiations / leasing land
- Intermediate Level Waste maintenance and emptying – continues until 2048
- Condition of land (former nuclear site)
- OFTO process & challenges



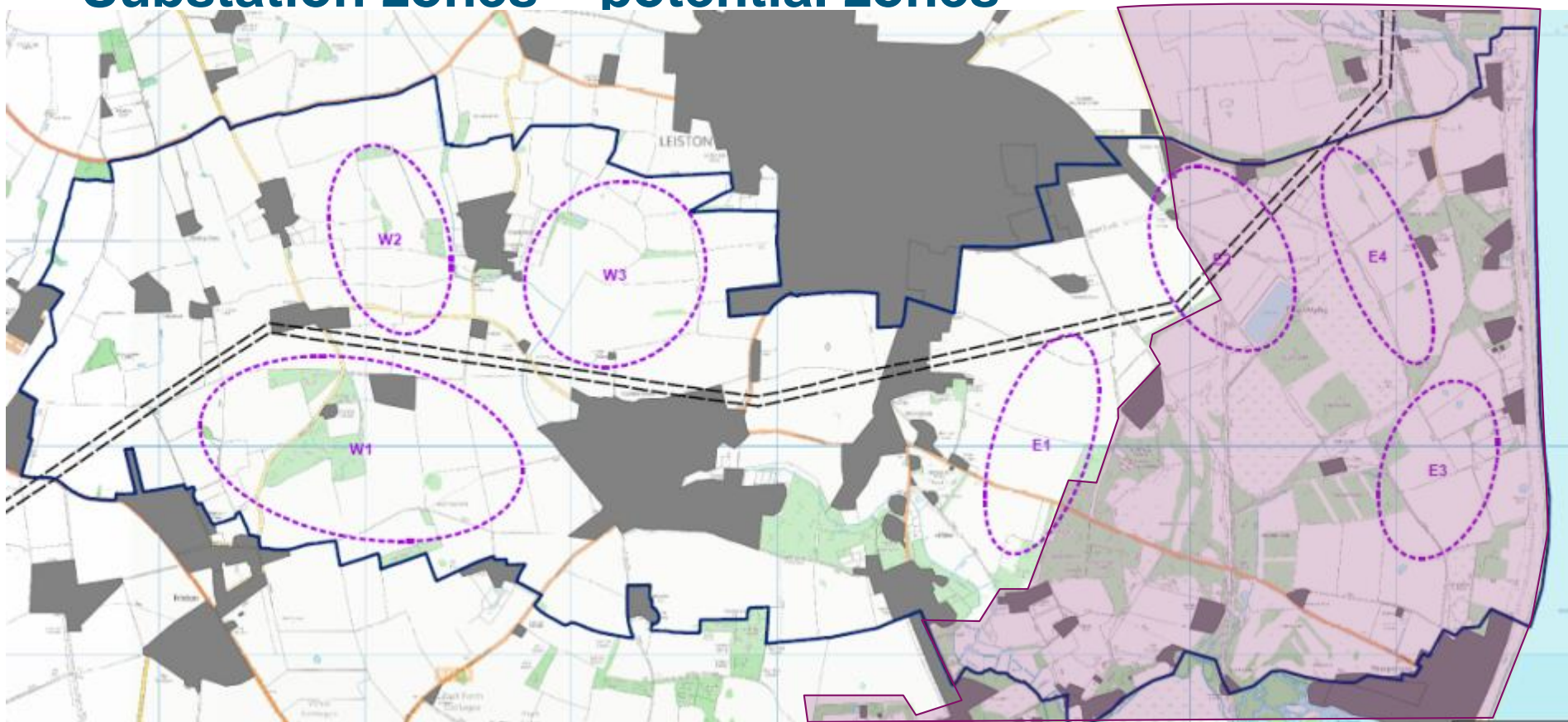
Onshore study area



Onshore study area



Substation zones – potential zones

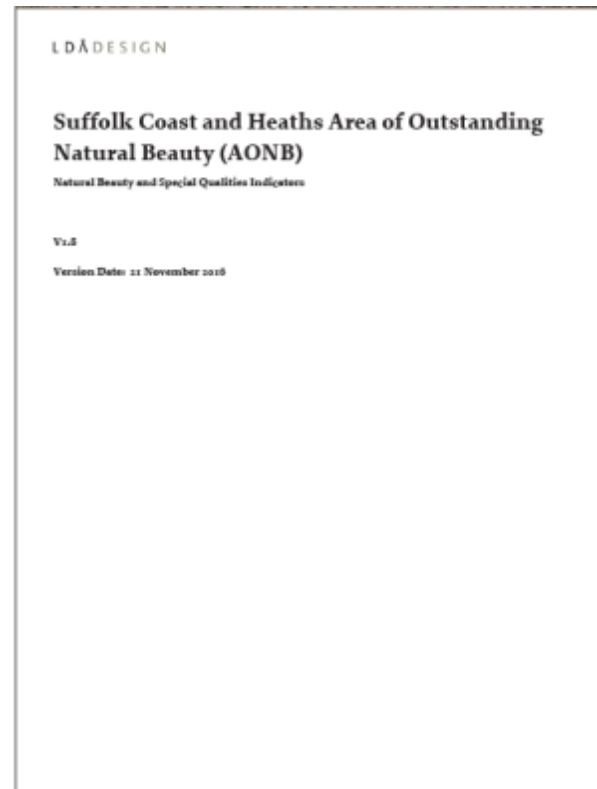


RAG (Red Amber Green) assessment

- Comparison between similar sites (optimal locations), assessed separately
 - 2 x SPR substations RAG
 - 1 x NG substation RAG
- Development considerations on **26** (SPR) and **24** (NG) parameters:
 - Community, property & planning
 - Landscape & visual
 - Engineering
 - Ecology
 - Archaeology
 - Hydrology / hydrogeology
- Ranking: defined parameters, professional judgement or relative to other options
- Red score does not eliminate an option

AONB special qualities appraisal

- 'Natural beauty' indicators identified in Section 2.0 of the AONB 'Special Qualities Report'
- Indicators of the landscape qualities of the AONB:
 - Landscape qualities
 - Scenic qualities
 - Relative wildness
 - Relative tranquility
 - Natural heritage features
 - Cultural heritage features
- Each substation zone assessed against each 'natural beauty' indicator
 - AONB indicator present in the baseline of substation zone? (prevalent/notable/limited/not present)
 - magnitude of change to special quality? (high/medium/low/none)
 - potential effect on AONB special quality? (significant/not significant)



AONB special qualities appraisal

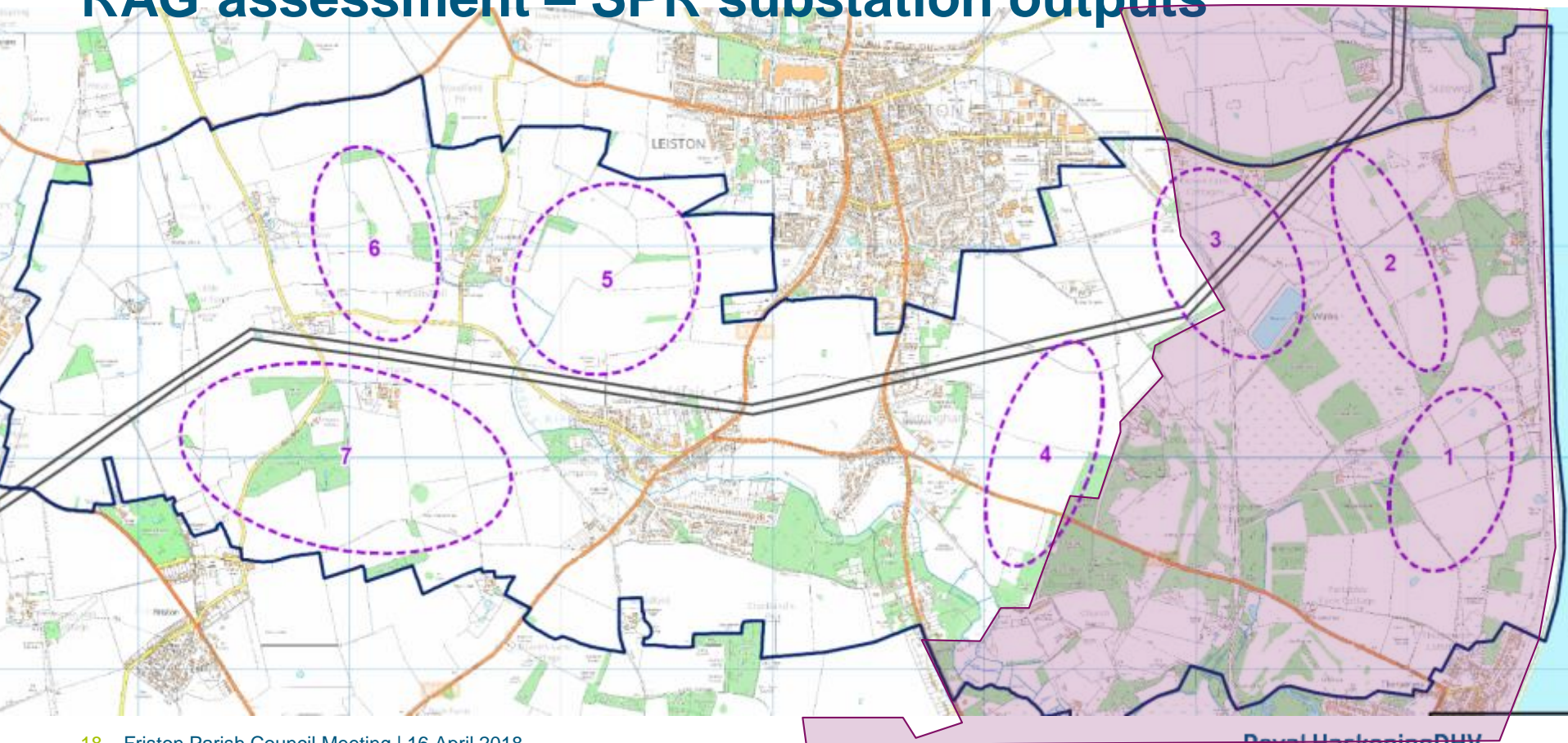
- Eastern zones (E1, E2, E4) would have some significant effects on special qualities of AONB, particularly:
 - E1 & E2 - setting of AONB / Sandlings Forests that form backdrop and on 'gateways' to AONB (via PRoW and Thorpeness Rd)
 - E4 - consolidates and intensifies significant effects of energy generation and transmission infrastructure, but avoids wider spatial effect on other qualities of AONB
- NPF para 116 '*except in exceptional circumstances and where it can be demonstrated that they are in the public interest*'.
- Landscape rationale for substations to be sited as close as possible to Sizewell to avoid effects on other parts of AONB and communities further inland, however:
- Western zones (W1, W2, W3) would avoid significant effects on special qualities of AONB
- Significant effects on local character and views would still arise (just not on AONB)
- Mitigation measures more capable of being delivered and effective in western zones (through existing woodland screening and further planting)

Crossing Aldeburgh Road – Aldringham Court

RAG assessment – SPR substation results

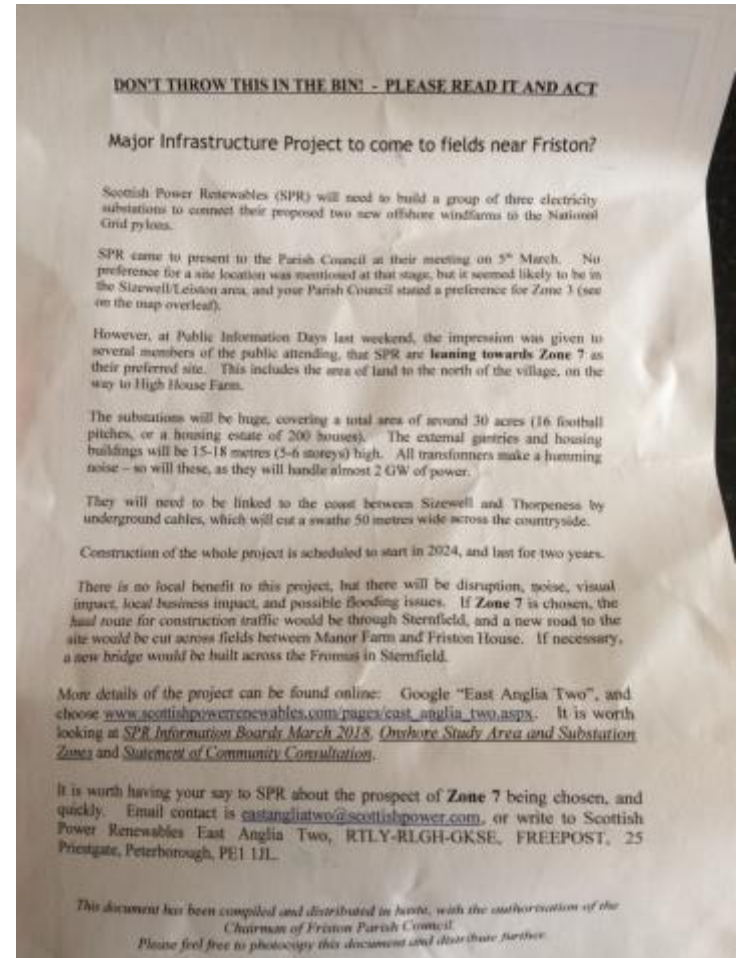
- AONB special qualities appraisal
- Crossing Aldeburgh Road
- Visual impact mitigation measures are more capable of being delivered and effective in western zones (through existing woodland screening and further planting).
- Improved connectivity between woodland habitats through landscape mitigation in western zones
- Consultation through Parish Council meetings and Public Information Days

RAG assessment – SPR substation outputs



Parish Council Flyer

- Presentation on 5th March to Friston Parish Council
- Zone 7
- Size of substation and cable route
- Noise (humming)
- Programme (two years)
- Local disruption (noise, visual, businesses & flooding)
- Construction access
- Feedback



Programme

- Scoping submission: 10th November 2017
- Scoping response: 20th December 2017

- Public Information Days: 17-18th & 24-25th March 2018

- **Red Line Boundary definition: Summer 2018**

- **Preliminary Environmental Information Report: Autumn 2018**

- **Environmental Statement: Q2 2019**

- Comments can be submitted to SPR at any time
 - eastangliaonenorth@scottishpower.com
 - eastangliatwo@scottishpower.com

AOB / Questions?